

 PORTMATESAFE AND SUSTAINABLE SMALL PORTS  
IN THE CENTRAL BALTIC REGION

leaflet 1/2019

RESOURCE EFFICIENCY: BEST  
PRACTICES IN SMALL PORTS

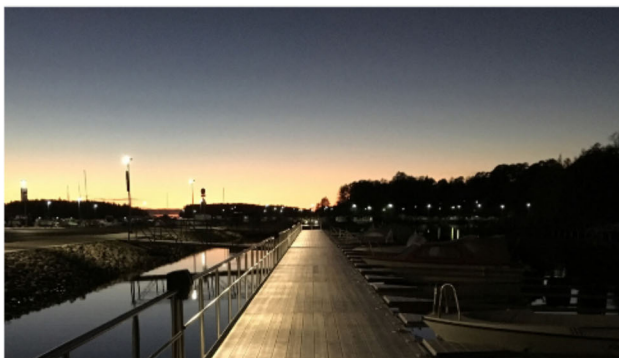
*The PortMate project's newest report concentrates on environmental matters by giving practical guidance on best resource efficient technologies in small ports. The guide and the PortMate online short courses on smart and green actions in small ports and green solutions for port owners give a good insight into resource efficiency in small ports in the Central Baltic region.*

**PortMate guide "Best Resource Efficient Technologies in Small Ports" published**

The PortMate project has published a report on resource efficient solutions for small ports. The report gives practical guidance on choosing, purchasing and installing resource efficient technologies – for example LED lighting and solar energy solutions as well as septic waste pump-out stations.

The aim of the guide is to introduce and define technologies which are suitable for small ports in particular. Practical examples are given in the form of the technologies that have been installed in the Central Baltic PortMate project pilot ports to enhance resource efficiency.

Follow the link to read the guide online:  
[Best Resource Efficient Technologies in Small Ports](#)



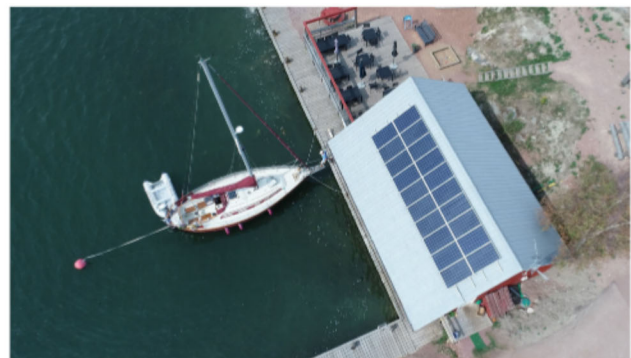
Dock LED lighting in Syväraumanlahti, Rauma.

**Online short courses within resource efficiency for port visitors and port owners**

PortMate online short courses give useful information and practical tips both for boaters, other small port visitors as well as small port operators.

The two online short courses concentrating on resource efficiency give guidance on best green practices for small port users and owners. The videos can be found on YouTube:

- [Smart and green actions in small ports](#)
- [Green solutions for port owners: Solar energy](#)



Installed On-Grid PV system in Sottunga small port.